

BUILDING A BIG SOCIETY FOR OUR AREA

A COMMUNITY PLAN FOR BLABY DISTRICT

2011-2014



CONTENTS

- 01** Foreword – Building A Big Society for Our Area
- 02** Our Vision for Blaby District
- 03** A snapshot of Blaby District
- 04** Who is Blaby Together and how the Partnership Works
- 06** About the Community Plan
- 07** Managing the Way We Work
- 08** Action Plans - Making it happen





FOREWORD

As Chair of Blaby Together and Leader of Blaby District Council I am proud of the work we carry out in partnership in order to make Blaby District the place it is today. The District has many fine points and has previously been picked out in national surveys as a great place to live.

I am certain that the strong partnership that delivered the Sustainable Community Strategy for the period 2008-2011 will serve us well during this period of austerity. It will only be through the combined commitment of organisations such as the District Council, Leicestershire County Council, the Police, the Fire and Rescue Service, our vibrant voluntary sector and the involvement of our communities that we will be able to continue to deliver an ever improving quality of life for local people. That is why the new Community Plan 2011-2014 is called, “**Building a Big Society for Our Area.**” I believe the District already has a “**Big Society**” but together we can do more and this document takes us further on our journey.

If you would like to know more about how you can get involved in “**Building A Big Society for Blaby District**” please let me know or email strategicpartnerships@blaby.gov.uk.

Together we will make a positive difference and together we will build our “**Big Society**”.



Cllr Ernie White
Leader of Blaby District Council
Chair of Blaby Together





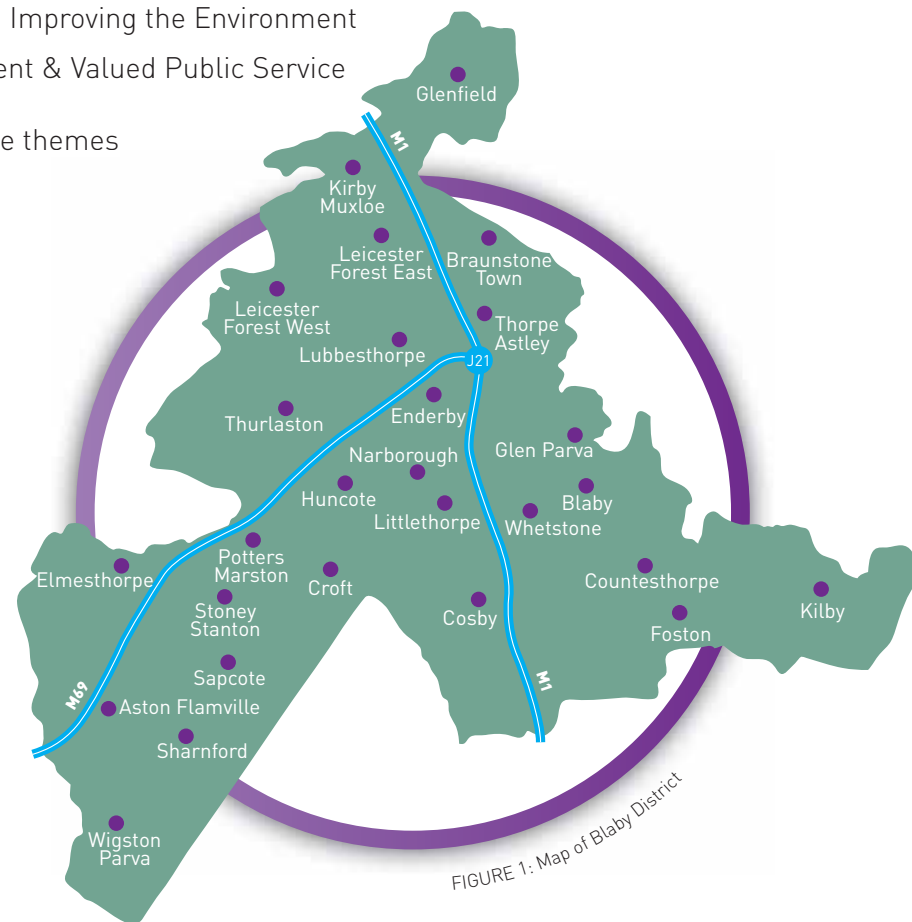
OUR VISION FOR BLABY DISTRICT

In 2026 Blaby District will be made up of thriving sustainable, safe, healthy, fair and secure communities, where people are happy to live and work. We want Blaby District to be known for:-

- Health & Well Being For All
- Access to quality provision for Children & Young People
- Vibrant Places – Sustaining and Improving the Environment
- High Quality, Responsive, Efficient & Valued Public Service

We believe these priorities fit into three themes

People, Vibrant Places and **Services**.



A SNAPSHOT OF BLABY DISTRICT

- 93,600 people live in Blaby District (ONS 2009 mid year statistics).
- The population of Blaby District has grown by 4% between 2001-2009 (ONS 2009 mid year statistics).
- The north of the District is mainly urban whilst the south more rural.
- The economy is mainly based on distribution, hospitality, transport and communication.
- Blaby District has 18 wards and is covered by 1 Local Policing Unit based in Braunstone.
- 81% of residents think that Blaby is a good place to live and 85.8% think people from different backgrounds get along, the second highest percentage within the county (2008 Place Survey).
- Blaby was ranked the 23rd best place to live in a national Quality of Life Survey of 408 local authorities. Blaby was the highest ranking local authority in Leicestershire and the only one within the top 50 (2009 Halifax Quality of Life Survey).
- The District is the 28th least deprived in the country out of 354 districts (2007 indices of Deprivation).



WHO IS BLABY TOGETHER?

Blaby Together is the Local Strategic Partnership for Blaby District. In other words it is a partnership with the commitment of the public, private and voluntary sector to improve the well being of our area.

The key agencies in Blaby Together include:-

- Blaby District Council
- Citizens Advice Bureau
- Community Action Blaby District
- Leicestershire County Council
- Leicestershire Constabulary
- Leicestershire & Rutland Rural Community Council
- Leicestershire & Rutland Association of Local Councils
- Leicestershire Chamber of Commerce
- Leicestershire Fire & Rescue Service
- Three Oaks Homes
- Federation of Small Businesses
- Primary Care Trust

ABOUT OUR STRUCTURE AND PARTNERS

Locally

Blaby Together is a partnership which is divided into a Board, which drives the District's Community Plan and Big Society agenda, beneath which sit a number of groups and strategies divided into three themes: **People**, **Vibrant Places** and **Services**. Commissioning arrangements are illustrated on page 5.

Through these working groups and the Board a range of local networks are accessed such as the three community forums and importantly Town and Parish Councils. The partnership is focussed on local outcomes that provide Public Value and it is at this neighbourhood level that the Community Plan is translated into real action in order to deliver the aspirations for **"Building our Big Society"**.





LEICESTERSHIRE
together

Blaby
together
committed to our community



FIGURE 2: The Structure of Blaby Together

COUNTY AND SUB-REGIONAL LEVEL

Blaby Together works with a range of partners within the County which combine to form Leicestershire Together, the LSP covering all partners in Leicestershire. New partnership arrangements introduced during 2011 mean that Leicestershire Together is supported by a Commissioning Board, associated Executive and five thematic commissioning hubs as shown below.

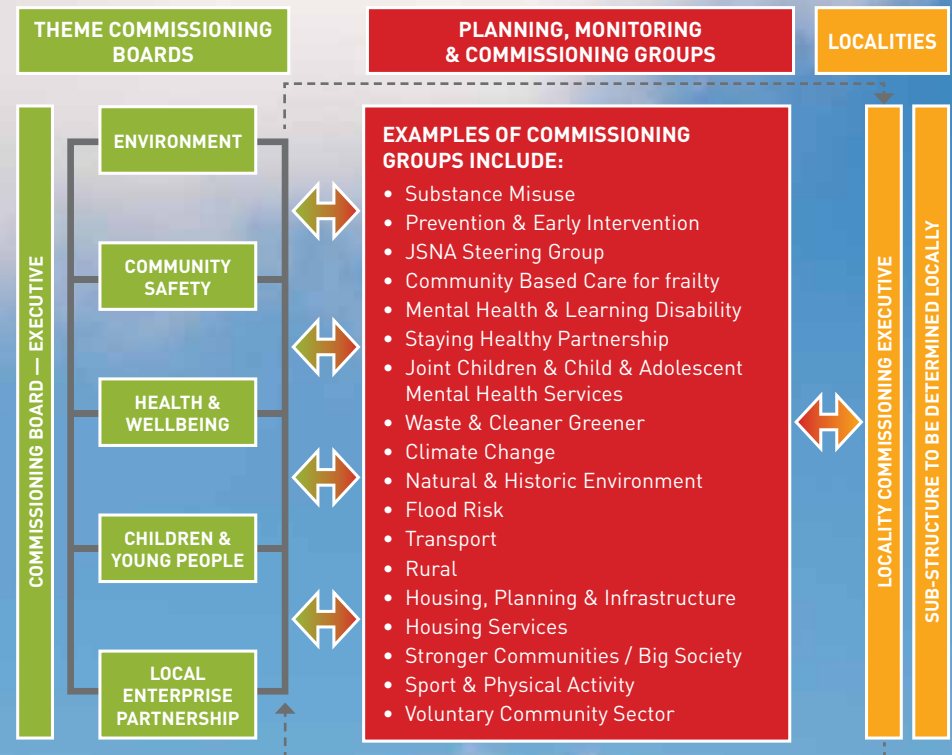


FIGURE 3: The Structure of Leicestershire Together.
NB: Blaby Together is represented in this diagram as the locality commissioning executive.

ABOUT THE COMMUNITY PLAN

This Community Plan sets out our long term vision for the District of Blaby and explains what we plan to do to achieve it. It replaces the Sustainable Community Strategy 2008-2011 and covers the period 2011-2014. It is a statutory requirement that the District Council produces a Sustainable Community Strategy through a Local Strategic Partnership (LSP). For Blaby District our LSP is Blaby Together.

In addition to the Blaby Together Board the Community Plan has been developed with the involvement of local people through a range of different activities including community forums, contact with Local Councils and surveys, in particular the “Tell Us More” survey which took place over the summer of 2010.

Local People have told us their local priorities as set out on page 2. From this and evidence on the quality of life experienced in our District, the agencies within Blaby Together have developed an action plan that commits them and the collective resources held within the partnership to these key areas of work and a set of ambitions. The Community Plan is an over arching document that is supported

by other strategies (for example the Community Safety Plan, Housing Strategy etc) that also link to the vision for Blaby District and it is not intended to reproduce all actions relating to those documents here or actions relating to normal day to day core services.

Pages 8-17 sets out the key actions against Blaby Together’s priorities and ambitions for 2011-2014 and beyond.

TO MAKE SURE THE COMMUNITY PLAN IS ACHIEVABLE WE HAVE CARRIED OUT A NUMBER OF ASSESSMENTS:-

SUSTAINABILITY APPRAISAL

This is a way of checking whether we will be able to continue making improvements



in the future, without negative effects on other generations and their environment.

RISK ASSESSMENT

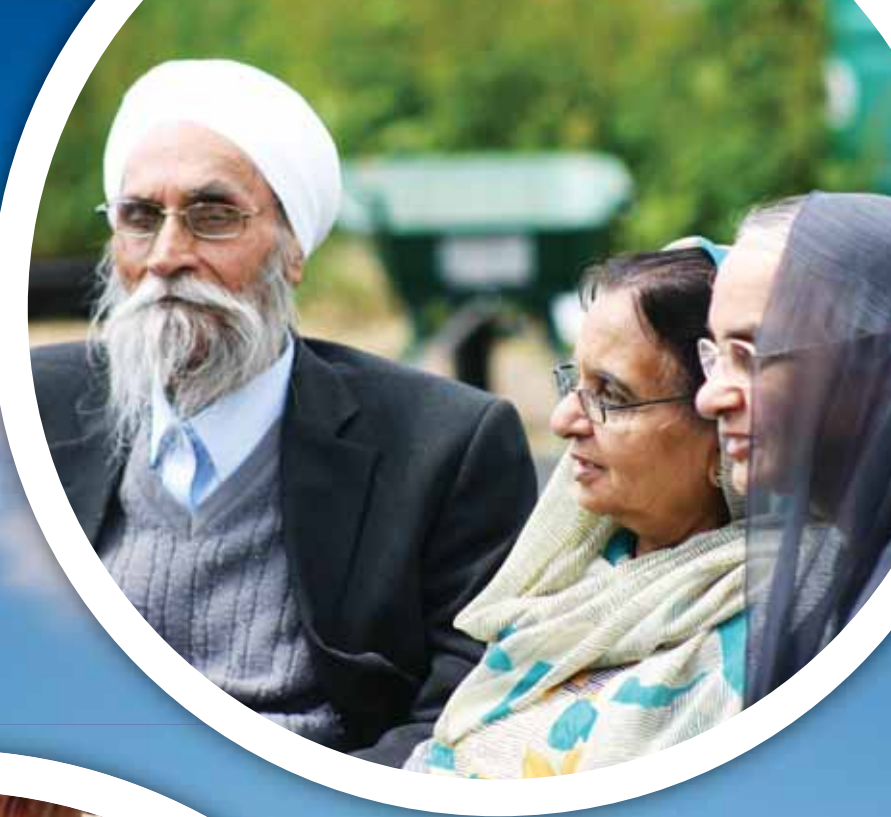
We carry out a risk assessment to identify any possible risks to being able to deliver improvement. We then look at the risk and make sure it does not happen or seek to control its impact.

EQUALITIES IMPACT NEEDS ASSESSMENT

This makes sure that we consider the needs of different people, such as disabled or young people, and how they are affected when we come up with policies or ways to deliver services. We will look at the different needs of a wide range of people.

MANAGING THE WAY WE WORK

Progress of our projects and action plan will be monitored by the Blaby Together Board, the District's Locality Commissioning Executive, every three months and will also be reported to Blaby District Council's Cabinet Executive and scrutiny Commission every six months. Every year we will publish a full report and there will be a summary in the Council's newsletter, the "Contact" magazine.



BLABY DISTRICT COMMUNITY PLAN 2011-2014 – CRITICAL ACTIONS

PRIORITY: VIBRANT PLACES – SUSTAINING AND IMPROVING THE ENVIRONMENT

AMBITION	CRITICAL ACTIVITY	ORGANISATION	TIMESCALE 2011-2014	MEASURE
1. There will be less nuisance and fewer community safety issues relating to traffic.	a) Programme to improve car parking on TOH estates.	TOH	2011	i) Improved car parking on estates.
	b) Deliver an effective Local Transport Plan 3.	LCC	Ongoing	i) Objectives within LTP3 satisfied.
	c) Support communities to identify local traffic issues and nuisance and work with them to explore innovative solutions.	RCC/BDC/LCC/ Road Safety Partnership	Ongoing	i) Number of communities supported by local led planning. ii) Number of additional communities supported (subject to funding/ capacity).
2. There will be greater opportunities for people to travel by public transport and means other than the car.	a) Identify and explore ways to encourage residents to travel through sustainable means e.g. neighbourhood car share schemes.	LCC/BDC/RCC	Ongoing to 2014	i) Schemes/plans developed. ii) Participants in schemes.
	b) Ensure all large businesses have travel plans and assist with their development. Focussing on Grove Park initially as part of a rolling programme across the District.	BDC/LCC/ Prospect Leicester	Ongoing to 2014	i) Travel plans in place by large businesses. ii) Grove Park covered by 2012. iii) Programme with timescales in place for other key sites.
	c) Support communities to identify where and what improvements to cycle facilities are required.	RCC/LCC	Ongoing	i) Number of communities supported through community led planning. ii) Number of additional communities supported (subject to funding/capacity).
	d) Seek ways of improving cycle facilities district wide.	LCC/BDC	Ongoing to 2014	i) Number of cycle facilities improved over the plan period. ii) Length of cycle ways available.
	e) Identify areas where key services are not accessible by public transport and or other sustainable travel options, Identify potential solutions and lobby on behalf of local communities.	BDC/LCC	Ongoing to 2014	i) Areas identified. ii) Potential solutions identified. iii) Initial viability established. iv) Business case prepared. v) Viable schemes delivered.

3. Community areas including recreation, parks and open spaces and streets will be clean for all to enjoy and use.	a) Enhanced grounds maintenance programme for open spaces.	TOH	2012	i) Improved satisfaction with TOH estates open spaces.
	b) Identify problem areas and work with partner agencies and local communities to develop long term solutions for litter, anti-social behaviour, graffiti, criminal damage hotspots.	BDC/LCC/RCC/CABD/Local Councils	Ongoing to 2014	i) Priority problem areas identified. ii) Solutions developed, including restorative justice. iii) Improvements made. iv) Issues resolved.
	c) Develop and support Litter wardens within parishes to provide additional resources to assist District Cleansing and to foster community pride.	BDC	Ongoing to 2014	i) Number of litter wardens. ii) Number of parishes supported by litter wardens.
	d) Deliver a programme of advice and support for volunteers who manage and maintain local community facilities and open spaces.	RCC	Ongoing	i) Number of communities advised or supported.
	e) Preventative work particularly around the cleansing of streets to reduce the amount of unwanted refuse and abandoned cars. This focus will be of particular significance in the Summer and in the lead up to Bonfire Night.	BDC/LFRS/Police	Ongoing	i) Reduction in unauthorised fires.
4. Blaby town centre will provide a greater retail experience for shoppers.	a) Seek funding opportunities and support initiatives which will improve Blaby Town Centre in accordance with the Town Centre Masterplan.	BDC/LCC/Parish Council	Ongoing	i) Funding bids made. ii) Funding secured. iii) Projects delivered to improve the town centre.
	b) Enable and support residents and service users of Blaby to be involved in the delivery of Blaby Town Centre Masterplan through community led planning.	RCC/BDC/Parish Council	Ongoing	i) Level of community involvement

5. Use of current infrastructure (roads, community facilities, public realm) will be maximised and improved where economically viable.	a) Explore ways that park and ride sites can be utilised to provide additional benefits for the residents and employees of Blaby District.	BDC/LCC/Local Businesses	Ongoing to 2014	i) Options for demonstrable additional benefits from park and ride sites developed. ii) Options assessed in terms of viability. iii) Any viable options appropriately pursued.
	b) Review and seek to ensure optimum use of public/community assets.	BDC/LCC/Others	Ongoing	i) All public/Community assets mapped.
6. New infrastructure (roads, community facilities etc) will be included as appropriate to support any proposed growth through development.	a) Deliver the new Blaby District Core Strategy or equivalent Local Plan for the District.	BDC	2013	i) New Core Strategy (Local Plan) in place.
7. The housing needs of communities will be met, including ensuring affordable housing for all age groups across the District.	a) Develop at least 25 new TOH homes per annum.	TOH	2011 -2014	i) 25 new TOH built per year.
	b) Upgrade/remodel TOH sheltered schemes.	TOH	2015 (beyond the plan period)	i) Identified TOH sheltered schemes upgraded/remodelled.
	c) Development of more accommodation for vulnerable people, including extra care schemes.	TOH	2013	i) Increase in accommodation provided.
	d) Promote the option of shared ownership properties for people wishing to downsize.	BDC	2011	i) Demonstrable promotion.
	e) Deliver a campaign to promote the need and encourage support from local communities for affordable housing, using techniques such as community led planning. This work is to include raising awareness of and exploring alternative methods for the provision of affordable housing such as Community Land Trusts and Local Delivery Vehicles.	BDC/RCC	2011 and ongoing	i) Sustainable campaign delivered. ii) Awareness of the need for affordable housing raised. iii) Alternative methods explored and as appropriate utilised. iv) Surveys.

7. Continued	f) Deliver a programme of work targeting rural exception sites.	BDC	2011-2012	i) Appropriate development in rural areas supporting community need.
	g) Work to enable local communities to be fully involved in local planning matters, building the capacity for local communities to participate at the neighbourhood level.	BDC	Ongoing	i) Demonstrable work to enable an increase in informed local community involvement. ii) Increased local community involvement (as opposed to pure consultation) in planning matters.
	h) Deliver a programme of work to bring properties that have been empty in the District for more than 1 year back into use and to bring non-decent properties up to the required Decent Homes Standard.	BDC	Ongoing	i) Increase in empty homes brought back into use.
8. Development of the right quality & quantity (housing and employment sites) to take place in the right places, informed by local communities and their representatives.	a) Deliver the new Blaby District Core Strategy or equivalent Local Plan for the District.	BDC	2013	i) Local Plan or equivalent in place.
	b) Promote and raise awareness of renewable energy installation both as a retrofit and for new properties, leading to demonstrable uptake.	BDC/LCC	Ongoing	i) Programme of awareness raising delivered. ii) Demonstrable uptake as a result of the programme of work.
	c) Develop opportunities to enhance Community Led Planning.	RCC/BDC	Ongoing	i) Number of Community Led Plans. ii) Number of Communities engaged.
9. Communities make appropriate adaptations to climate change and take steps to reduce its impact.	a) Support community groups to undertake initiatives that improve local resilience to the impacts of climate change.	BDC/RCC	Ongoing	i) Number of Community groups supported. ii) Demonstrable improvements made.

PRIORITY: ACCESS TO QUALITY PROVISION FOR CHILDREN & YOUNG PEOPLE

AMBITION	CRITICAL ACTIVITY	ORGANISATION	TIMESCALE 2011-2014	MEASURE
1. There will be better and more facilities and activities for Children and Young People.	a) Develop a Children Centre with associated services at Countesthorpe.	BDC/LCC	2011	Children Centre at Countesthorpe established.
	b) Support the establishment of three new facilities for young people over the plan period.	BDC/LCC/Local Councils/RCC	2011-14	i) One new facility established per year.
2. Integrated youth support work available for the most vulnerable young people.	a) Promote and increase the use of the Common Assessment Framework.	LCC	2011	i) Number of CAFs raised by agencies.
	b) Reappraise and develop the integrated multi – agency “Youth Offer” for Blaby District.	LCC/BDC & All youth agencies including schools and Local Councils	2011	i) New “Youth Offer” established.
	c) Through consultation with young people, identify gaps in provision for vulnerable young people across the district and work with partner organisations to identify suitable solutions.	RCC	Ongoing	i) Number of consultations undertaken (subject to funding/capacity). ii) Number of children and young people engaged. iii) Reduced gaps in provision
3. Greater support for families with young children and teenagers.	a) Develop a targeted programme of integrated support for vulnerable families.	LCC/BDC/LPG	2011	i) Programme established. ii) Number of partners. working together/ engaged. iii) Number of vulnerable families supported.
	b) Provide a programme of parenting services (advice/guidance) for parents of 0-19 year olds.	LPG	2011-2014	i) Number of parents receiving one off sessions.
	c) Provide a Children Centre Commissioning Programme in Blaby District and the Borough of Oadby & Wigston. Programme to include:- i. Support for 0-5 year olds at risk of obesity. ii. Support for breast feeding mums. iii. Support for mums experiencing post-natal illness. iv. Child safety and first aid awareness. v. Financial health checks for new parents etc.	LCC/BDC/OWBC/LPG	Ongoing	i) Measured provided by contracts.

4. Young people are actively involved in planning and delivering improvements to services.	a) Further develop the Blaby Youth Outreach Project through use of ICT Technology.	BDC	2011	i) Facebook, on-line forums or similar innovations used as part of the outreach service.
	b) Develop a new model of support for the Youth Council for the district.	BDC/LCC/CABD	2012	i) New Youth Council model established. ii) Self assessment by the youth council to establish its effectiveness in supporting service improvements.
	c) Ensure young people are involved in the production and implementation of 'Community Led Plans' across the district.	RCC	Ongoing	i) Number of Community Led Plans delivered (subject to funding/capacity). ii) Number of children and young people engaged.
	d) Engage young people in specific youth consultation projects relating to local issues & improvements to facilities and services.	RCC	Ongoing	i) Number of consultations (subject to funding/capacity). ii) Number of children and young people engaged.
5. All children and young people reach their potential, including in education.	a) Deliver the Children Centre Commissioning Programme including:- <ul style="list-style-type: none"> • Supporting the children's workforce to understand Speech and Language Therapy (SALT) issues. • Support improvement in Early Years Foundation Stage outcomes in pre-school and reception. • Support young parents to access employment, education and training. 	BDC/LCC/OWBC	2011-2014	i) Measures included in contracts. ii) Reduction in young parents that are Not in Employment ducation or Training (NEETs).

PRIORITY: HEALTH & WELL BEING FOR ALL

AMBITION	CRITICAL ACTIVITY	ORGANISATION	TIMESCALE 2011-2014	MEASURE
1. The health of residents will improve through preventative measures.	a) Deliver the Sporting Change programme to support adults experiencing mental health issues to achieving a healthy lifestyle.	CABD	2011-2014	i) Deliver the plan and evaluate.
	b) Further develop "A Place to Grow" by introducing water and electricity, increasing the diversity of users and creating a wildlife area.	CABD/BDC	2011-2014	i) Water & electricity brought onto the site. ii) increase in diversity of users. iii) Wildlife area created.
	c) Promote the "Grow, Cook and Eat" initiative to targeted families in the District.	BDC/CABD/ HomeStart	2011	i) Number of families producing home grown produce.
	d) Provide suicide awareness training courses to increase awareness of good emotional health and mental well-being, reduce the stigma of suicide, and provide guidance on how to help those suffering stress or experiencing suicidal thoughts.	RCC	Ongoing to 2012	i) Training course delivered.
	e) Deliver the Children Centre Programme in Blaby and Oadby & Wigston.	LPG	2011-2013	i) Children Centre Programme Measures.
2. Vulnerable people are more involved, valued and supported to live independently within the community with a good quality of life.	a) Continue Blaby District Befrienders Scheme into 2011/12 and investigate sources of sustainable funding for future years.	CABD	2011/12	i) Scheme successful in 2011/12 and sustainable funding stream secured.
	b) Further develop the District's Community Transport Scheme to meet current needs.	CABD/ Commbus	Ongoing	i) Numbers of people with access to scheme. ii) Numbers of additional services accessed by average individual. iii) Number of users of the scheme.

2. Continued	c) To extend the First Contact Scheme to include 18-59 year olds focussing in particular on vulnerable people i.e. elderly and those experiencing mental health problems.	BDC/LCC	Ongoing	i) Number of First Contact referrals. ii) Numbers of service providers participating in the scheme.
	d) To develop a scheme with relevant partners to install a greater number of free smoke alarms in houses of identified vulnerable people and increase fire prevention advice to a greater number of vulnerable people.	LFRS/ Partners	2011/12	i) Scheme developed. ii) Number of vulnerable people participating in the scheme.
	e) Identify the need/potential for community led 'Good Neighbour Schemes' across the district.	RCC	Ongoing	i) Potential schemes identified.
	f) Develop and support volunteer led 'Good Neighbour Schemes' within communities across the district.	RCC	2011-2014	i) Number of schemes (subject to funding/capacity).
3. There will be greater opportunities for people to improve their chances of employment.	a) Provide support to the unemployed in the District to access employment through "Job Done" development programme.	LCC Adult Learning/ CABD	Ongoing	i) No. of people accessing the scheme. ii) Proportion of those attending gaining employment.
	b) Expand the volunteer/work placement scheme across the district.	BDC/CABD/VAL	Ongoing	i) Number of volunteers/number of work placements successfully completed/number of people getting work following volunteering or placement.
	c) Co-ordinate activities to help people access employment and training initiatives.	BDC/CABD/LCC Adult Learning/ Business Link	2011	i) Activities mapped and a programme of co-ordinated activity available.
	d) Deliver Community Sports Leaders Awards to members of the community .	BDC	September 2011	i) Number of training opportunities/volunteers.

<p>4. People feel a greater sense of pride, local identity and get on well together in their communities irrespective of personal background.</p>	a) Programme of initiatives to support the delivery of the Big Society in Blaby District through enhancing community involvement.	CABD/TOH/ RCC/LCC	Ongoing	i) Number of activities. ii) Minority groups engaged. iii) Improved outcomes achieved.
	b) Undertake seven targeted community safety roadshows across the district to provide reassurance and raising public confidence.	BDC/Police/ CSP	2011-12	i) Number undertaken. ii) Reduction in crime in targeted areas.
	c) Improve Section 106 projects through links with Parish Councils.	BDC/ Parish Councils	Ongoing	i) Number of events held. ii) Number of projects delivered. iii) Community satisfaction.
	d) Enable the community ownership of land and building assets across the district as appropriate.	BDC	Ongoing	i) Increase in community ownership of land and building assets.
	e) Increase participation in community forums by residents.	LCC/BDC/CABD	2011	i) Increase in attendance at community forums by residents. ii) Attendance at community forums from a range of communities from within the area.
	f) Support opportunities for all residents to engage in Olympic themed arts/cultural activities in the countdown to London 2012 Games.	BDC/CABD	2011-12	i) Number of events/activities. ii) Number participating.
	g) Support residents within communities across the district to work together on the production of 'Community Led Plans'.	RCC	Ongoing	i) Number of Community Led Plans delivered (subject to funding/capacity).
	h) Support volunteers to implement projects and actions to tackle issues raised through Community Led Plans.	RCC/BDC	Ongoing	i) Subject to funding/capacity.

5. Crime levels including Anti-Social Behaviour will fall, people will feel safer and have a greater public confidence in all community safety services.	a) Provide a domestic abuse and substance misuse service to all residents of the district.	BDC/CABD/LPG	Ongoing	i) Number of people helped. ii) Numbers of domestic abuse incidence reported. iii) Numbers of re-offending.
	b) Promote the Financial Inclusion agenda, develop a credit union in Blaby District and support basic bank accounts, to reduce the amount of doorstep lending.	BDC	Ongoing	i) Credit Union established ii) Number of members iii) Amount of money deposited/lent.
	c) To conduct a programme of support and education for licensed traders in areas where there are reports of ASB or known underage sales.	BDC	Ongoing	i) Reduced underage drinking and Reduced Anti-Social Behaviour.

KEY:

BDC – Blaby District Council

CABD – Community Action Blaby District

CSP – Blaby District Community Safety Partnership

LCC – Leicestershire County Council

LPG – Locality Partnership Group

LFRS – Leicestershire Fire & Rescue Service

OWBC – Oadby & Wigston Borough Council

RCC – Rural Community Council

TOH – Three Oaks Homes

VAL – Voluntary Action Leicestershire

This document can be made available on request, in other languages and formats (large print, Braille or on audio tape) by contacting:

**Policy and Partnerships
Blaby District Council
Council Offices
Desford Road
Narborough
Leicester
LE19 2EP**

Tel: 0116 2727718

Fax: 0116 2750368

Mini com: 0116 2849786

Email: stratigic.partnerships@blaby.gov.uk

www.blaby.gov.uk

